

# Outpatient Brain Injury Program



## 2021 Report Card

### About Us

St. Luke's Outpatient Brain Injury Program is a comprehensive program with one goal: To educate and treat patients and families dealing with neurological injury.

The OPBI program has served patients and families since 1987. We're known throughout the community as the premiere outpatient rehabilitation provider for neurological conditions. Because of our program's longevity, we've been successful in establishing strong working relationships with physicians, school districts, universities and employers throughout Idaho.

### Treatment Plans

We offer a specialized interdisciplinary treatment approach designed to meet the needs of children, adolescents and adults as well as to support their families.

After initial evaluations, all patients receive individualized treatment plans that emphasize their reintegration back into their communities, including home, school and work.

### Team Approach

Patients and families work with a team of rehabilitation specialists who have extensive experience treating people with neurological issues. The team meets on a regular basis to review patient care plans, progress and potential barriers.

The team can consist of a variety of practitioners:

- Physical therapist.
- Occupational therapist.
- Speech/language pathologist.
- Social worker.
- Neuropsychologist.
- Psychiatrist.
- Program coordinator.

We also work closely with referring providers and other medical specialists involved in our patients' medical care.



### For more information:

#### *St. Luke's Rehabilitation*

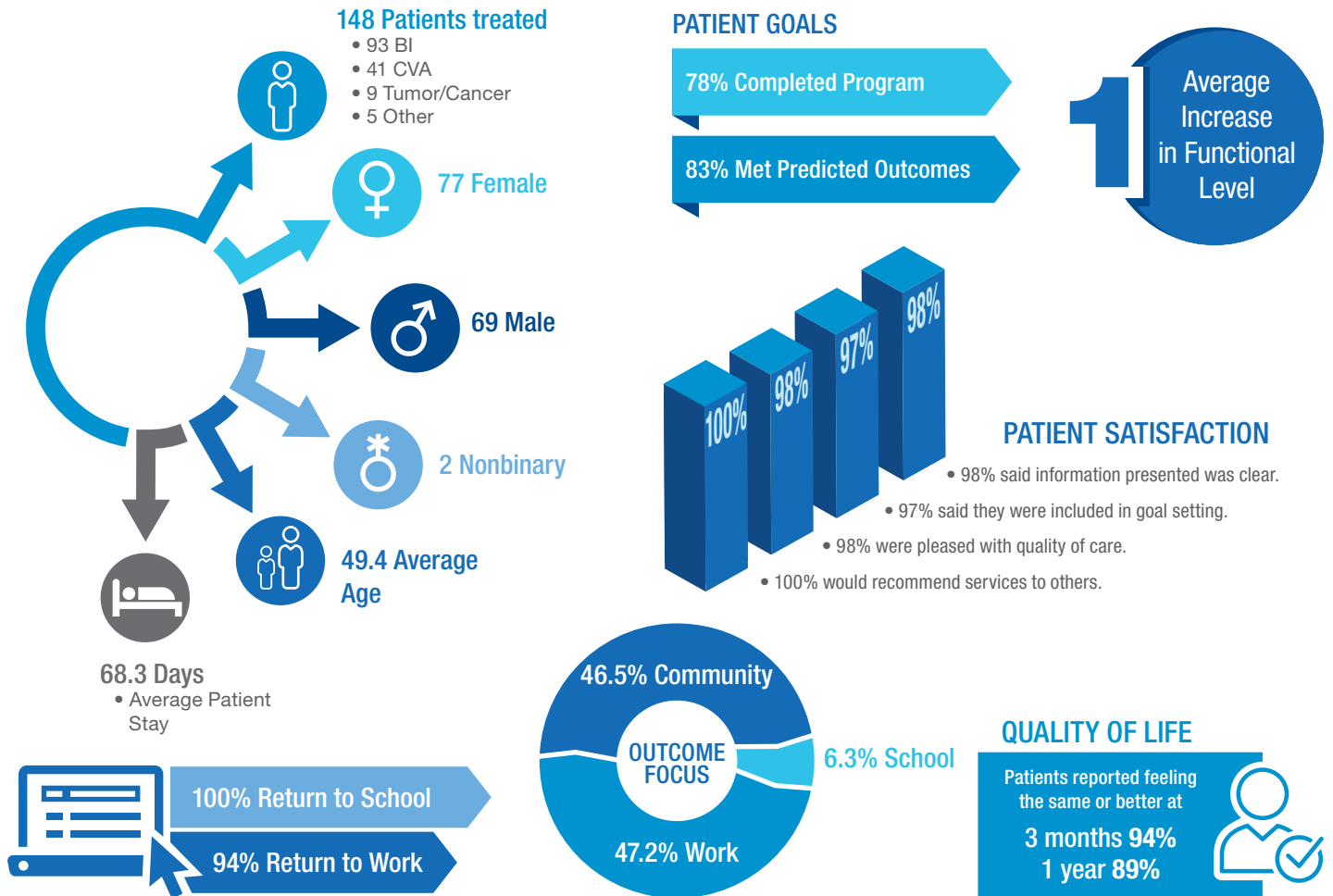
Outpatient Brain Injury Coordinator

Phone: 208-385-3251

Fax: 208-385-3281

# Outpatient Brain Injury Program – 2021

## OPBI Program 2021 Adult Outcomes



## OPBI Program 2021 Pediatric Outcomes

