

# Community Benefit Report

Twin Falls County

2021



**Better Together**

*A hiker and her companion explore a new foothills trail created through a partnership between St. Luke's and the City of Boise. The 0.75-mile trail connects the Boise VA Medical Center to existing trails in the Military Reserve area.*

CREL-083.3.22



# Continuing Our Legacy of Excellence in Health Care

From our founding in 1902 to 2021, when we were recognized as one of the top 15 health systems in the nation for the 8<sup>th</sup> consecutive year, St. Luke's has always been a leader in health care and a dedicated community partner.

As Idaho's only locally based, not-for-profit, community-owned and community-led health system, we are committed to providing all patients with the highest quality health care, regardless of their ability to pay.

**Watson Health<sup>®</sup>**

**15** Top Health Systems<sup>®</sup>



Together, every day, we are creating a world-class health system that deeply and expertly cares for patients and families, despite whatever hurdles are thrown our way.

– Chris Roth, St. Luke's President and CEO



Teaching new parents of high-risk infants lifesaving skills became much harder during the pandemic. Fortunately, a St. Luke's grant to the American Heart Association helped distribute 200 reusable, at-home, infant CPR kits among Nampa, Boise, Meridian and Twin Falls hospitals, which have neonatal intensive care units.



St. Luke's meets patients where they're at, even if that means developing new treatment models. The St. Luke's Clinic – COVID Recovery opened summer 2021 to study and further understand patients' symptoms, while a multi-disciplinary team continues their care.

## At a Glance: Caring for Our Communities in 2021

St. Luke's primary service area is Ada County, with our secondary service area covering Southwest and South-Central Idaho, Eastern Oregon and Northern Nevada. Below is a broad overview of the benefits St. Luke's provides to our service areas. This report also includes benefit snapshots broken down by county: Ada, Canyon and Twin Falls. All numbers are current as of the fiscal year ending Sept. 30, 2021.



**\$610.5 Million**  
Total Community  
Benefit



**\$20.2 Million**  
Charity Care



**\$66.2 Million**  
Services and Programs for the  
Community



**\$8.7 Million**  
Donations Received



It is a humbling opportunity to invest in large and small nonprofits doing extraordinary work at the ground level.

– Theresa McLeod, St. Luke's Administrator of  
Community Health & Engagement

### Community Needs Determination Process

St. Luke's community health effort is directed by community needs assessments, community boards and our community health team. In 2019, St. Luke's published our most recent Community Health Needs Assessment, which was designed to help us better understand the most significant health challenges facing the individuals and families in our service areas.

Local community health teams, in collaboration with internal and external stakeholders, are responsible for developing, implementing and maintaining optimal community health initiatives designed to address our communities' most significant health needs.

# Report of Community Benefits 2021

## Twin Falls County

What began as Twin Falls County Hospital in 1918 has evolved into a state-of-the-art medical center and a vital member of the communities it serves, providing a full range of inpatient and outpatient services to the people of Twin Falls, Southern Idaho and Northern Nevada.



**\$ 121.3 Million**  
Total Community Benefit



**\$1.1 Million**  
Donations Received



**247**  
Volunteer Hours



**59**  
Volunteers



**2,931**  
Employees



**159**  
Advanced Practice Providers\*



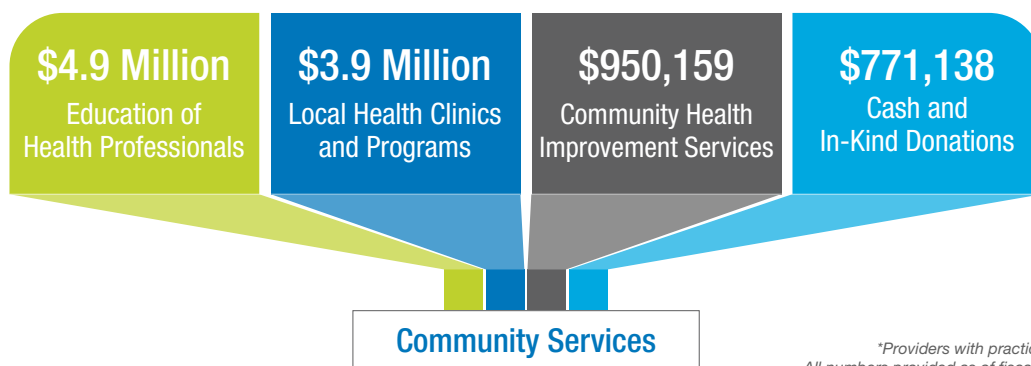
**299**  
Physicians\*

### The Magic Valley Health Foundation's Children with Special Needs Fund

surpassed its \$1 million fundraising goal. Since 2006, the fund has provided therapy, counseling, specialized equipment and more to local children with physical and/or mental disabilities.



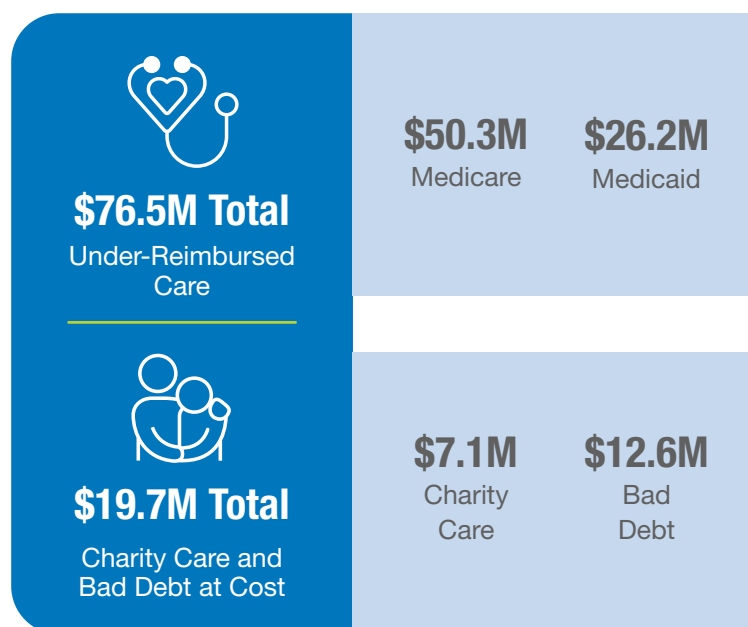
## Providing a High Quality of Care



\*Providers with practice privileges at our locations.  
All numbers provided as of fiscal year ending Sept. 30, 2021.

St. Luke's Twin Falls County facilities received **\$634,414** and **\$37,348,181** in government assistance revenue in the fiscal years ending September 2020 and 2021, respectively. These relief funds were to compensate for revenue lost because of suspended elective procedures due to the COVID-19 pandemic. The unreimbursed, charity care and bad debt amounts disclosed in this report do not include this government assistance revenue.

St. Luke's provides health care to eligible patients without charge or at a reduced rate, based upon a sliding scale derived from federal poverty guidelines.



## Improving Access to Patient-Centered Care

**\$14.5 Million**

Total Capital Improvements

One hundred percent of St. Luke's revenue after expenses is reinvested into land, facilities, equipment and other capital supporting the hospital's mission for Twin Falls County.

**\$4.8 Million**

Technology

We continually upgrade key information technology infrastructure to boost efficiencies, lower costs, and most importantly, improve safety and quality for patients.

**\$9.7 Million**

Hospital Expansion

Expansion included renovations, remodeling costs and new equipment to improve and expand our St. Luke's Magic Valley Hospital, Jerome Hospital, and clinics in Twin Falls and surrounding areas. These improvements to existing facilities will allow St. Luke's to continue to meet the medical needs of the growing community.

# Thank You

*Our work assessing and addressing community needs would not be possible without a visionary board of directors and dedicated community boards. We are grateful for their partnership and guidance.*

## **St. Luke's Health System Board of Directors as of Sept. 30, 2021:**

Bob Lokken, Chair  
Rosa Davila  
Brigette Bilyeu  
Tom Corrick  
Lucie DiMaggio, MD  
Mark Durcan  
Lisa Grow  
Allan Korn, MD  
Dan Krahn  
Jon Miller  
Arthur F. Oppenheimer  
Rich Raimondi  
Chris Roth, President/CEO  
Andrew Scoggin  
Karen Vauk  
Bill Whitacre

## **St. Luke's Magic Valley Regional Medical Center/ Jerome Community Board Members as of Sept. 30, 2021:**

Dave Snelson, Chair  
Arlen Blaylock  
Melody Bowyer  
Eva Craner  
Don Hall  
Roseanna Holliday  
Jill Howell  
Brian Johnson, MD  
Becky Nelson  
Janet Olmstead  
Julia Oxarango-Ingram  
Blake Pedersen, DO  
Edna Pierson  
Travis Rothweiler  
John Shine  
Scott Standley  
John Wright

*The information provided in this report is required by Idaho Code 63-602D, which states that 501(c)(3) hospitals having 150 or more beds must file a community benefit report with the Board of Equalization by Dec. 31 of each year. According to the code, the report is to include a description of the process the hospital has used to determine general community needs that align with the hospital's mission. In addition, the report shall include the hospital's amount of:*

- Unreimbursed services for the prior year (charity care, bad debt, and under-reimbursed care covered through government programs).
- Donated time, funds, subsidies and in-kind services.
- Additions to capital such as physical plant and equipment.

CREL-083.5.22