

# Community Benefit Report 2022

*Wood River*



# Continuing Our Legacy of Excellence in Health Care

From our founding in 1902 to 2022, when we were recognized as one of the top 15 health systems in the nation for the ninth consecutive year, St. Luke's has always been a leader in quality care and a dedicated community partner.

As Idaho's only locally based, not-for-profit, community owned and led health system, we are committed to providing all patients with the highest quality health care, regardless of their ability to pay.

merative  
15 Top  
Health  
Systems  
2022



Supported by amazing community partners, visionary board members and a highly dedicated team, St. Luke's delivers on its mission with care and compassion, and I'm proud and grateful to be part of that.

– Chris Roth, St. Luke's President and CEO



Recognizing the challenges many community members face when trying to navigate and access the health and social services they need, the bilingual outreach coordinators at St. Luke's Center for Community Health connect people to local health providers, emergency and social services, and government and nonprofit organizations to get support.



St. Luke's grants have assisted Men's Second Chance Living House to provide safe housing; medical, behavioral and dental health services; continued education and job training; and recreation passes to help dozens of men achieve and sustain sobriety. St. Luke's also partners with the living house for cooking and nutrition classes.

# At a Glance: Caring for Our Communities in 2022

St. Luke's primary service area is Ada County, with our secondary service area covering southwest and south-central Idaho, eastern Oregon and northern Nevada. The numbers below provide a broad overview of the rich benefits St. Luke's provides to local communities in these counties: Ada, Blaine, Canyon, Elmore, Jerome, Twin Falls and Valley. Please note that community benefits provided outside these counties is not captured in this data. All numbers are current as of the fiscal year ending Sept. 30, 2022.



**\$947 Million**  
Total Community  
Benefit



**\$27 Million**  
Charity Care



**\$78 Million**  
Services and Programs for the  
Community



**\$17 Million**  
Donations Received

## Community Needs Determination Process

St. Luke's community health efforts are directed by community needs assessments, St. Luke's community boards and community health managers. In 2022, St. Luke's published our most recent Community Health Needs Assessment, which is designed to help us better understand the most significant health challenges facing the individuals and families in our service areas.

Community Health and Engagement, in collaboration with internal and external stakeholders, is responsible for developing, implementing and maintaining optimal community health initiatives designed to address our communities' most significant health needs.



**It is exciting to invest in solutions and relationships that solve multiple challenges in our community, allowing us to increase our reach and impact to improve lives.**

*– Theresa McLeod, St. Luke's Administrator of  
Community Health and Engagement*

# Report of Community Benefits 2022

## St. Luke's Wood River

St. Luke's Wood River Medical Center is a critical access hospital serving Blaine County and the surrounding region. It provides a broad range of advanced services for its size, including an Emergency Department staffed by board-certified emergency physicians, state-of-the-art surgical facilities and outpatient infusion services, including chemotherapy. A wide variety of primary and specialty care providers coordinate patient care in local clinics, along with a network of more than 150 physicians.



**\$5 Million**  
Total Community Benefit



**\$3.2 Million**  
Donations Received



**10**  
Volunteer Hours



**2**  
Volunteers



**423**  
Employees

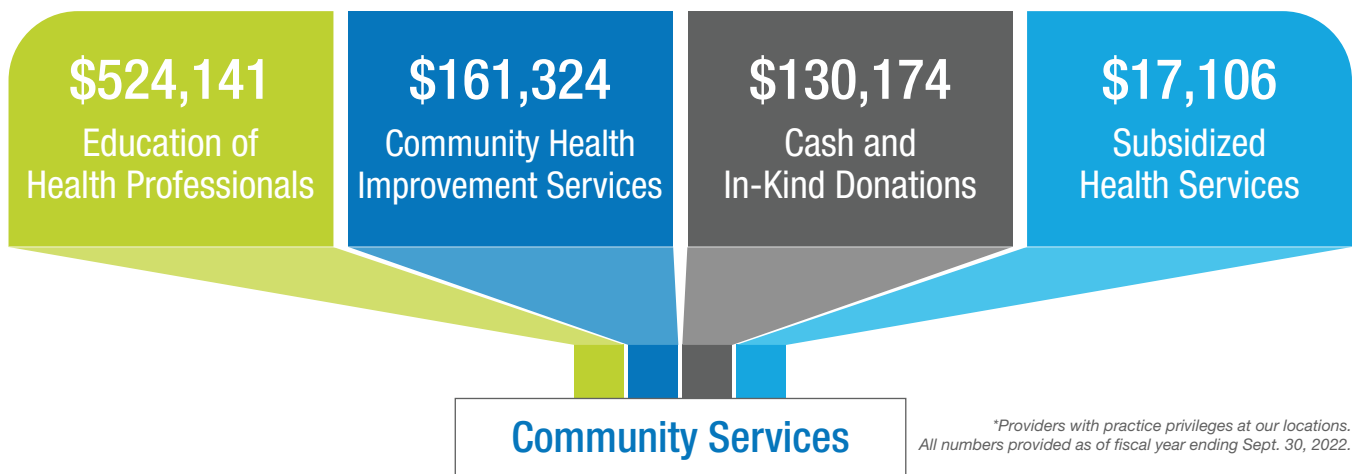


**160**  
Physicians\*

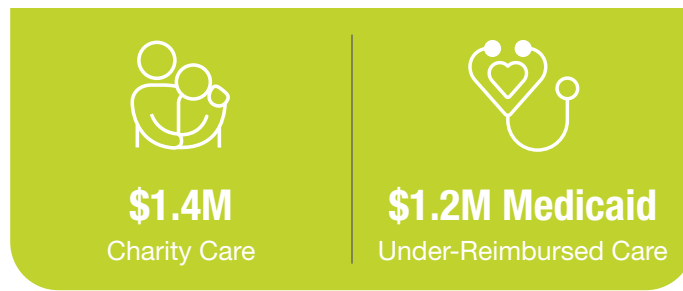


**40**  
Advanced Practice Providers\*

## Providing a High Quality of Care



\*Providers with practice privileges at our locations.  
All numbers provided as of fiscal year ending Sept. 30, 2022.



St. Luke's provides health care to eligible patients without charge or at a reduced rate, based upon a sliding scale derived from federal poverty guidelines.



“ St. Luke's provides grants that make community health outreach possible. For populations that have difficulty accessing care, bringing services such as vaccines to them makes it easier for them to maintain their health.

*– Dr. Alejandro Necochea, St. Luke's Internal Medicine Provider and Medical Director of Community Health*

”



# Giving Thanks

*Our work assessing and addressing community needs would not be possible without a visionary board of directors and dedicated community boards. We are grateful for their partnership and guidance.*

## **St. Luke's Health System Board of Directors as of Sept. 30, 2022:**

Bob Lokken, Chair  
Andrew Scoggin, Chair-Elect  
Emily Baker  
Brigette Bilyeu  
Tom Corrick  
Rosa Dávila  
Lucie DiMaggio, MD  
Mark Durcan  
Lisa Grow  
Allan Korn, MD  
Dan Krahn  
Jon Miller  
Chris Roth, President/CEO  
Rich Raimondi  
Bill Whitacre

## **St. Luke's Wood River Community Board Members as of Sept. 30, 2022:**

Eric Thomas, Chair  
Erin Clark  
Jim Foudy  
Ben Holmes  
George Kirk  
Jeanne Liston  
Julie Lyons, MD  
Cynthia Murphy  
Susan Parslow  
Garry Pearson  
Keith Perry  
Bob Robideaux  
Roger Sanger, DDS  
Jeff Smith  
Mary Williams

*The information provided in this report is required by Idaho Code 63-602D, which states that 501(c)(3) hospitals having 150 or more beds must file a community benefit report with the Board of Equalization by Dec. 31 of each year. According to the code, the report is to include a description of the process the hospital has used to determine general community needs that align with the hospital's mission. In addition, the report shall include the hospital's amount of:*

- *Unreimbursed services for the prior year (charity care, bad debt, and under-reimbursed care covered through government programs).*
- *Donated time, funds, subsidies and in-kind services.*
- *Additions to capital such as physical plant and equipment.*