

Community Benefit Report

Canyon County

2021



Better Together

A hiker and her companion explore a new foothills trail created through a partnership between St. Luke's and the City of Boise. The 0.75-mile trail connects the Boise VA Medical Center to existing trails in the Military Reserve area.

CREL-083.3.22

Continuing Our Legacy of Excellence in Health Care

From our founding in 1902 to 2021, when we were recognized as one of the top 15 health systems in the nation for the 8th consecutive year, St. Luke's has always been a leader in health care and a dedicated community partner.

As Idaho's only locally based, not-for-profit, community-owned and community-led health system, we are committed to providing all patients with the highest quality health care, regardless of their ability to pay.

Watson Health[®]

15 Top Health Systems[®]



Together, every day, we are creating a world-class health system that deeply and expertly cares for patients and families, despite whatever hurdles are thrown our way.

– Chris Roth, St. Luke's President and CEO



Teaching new parents of high-risk infants lifesaving skills became much harder during the pandemic. Fortunately, a St. Luke's grant to the American Heart Association helped distribute 200 reusable, at-home, infant CPR kits among Nampa, Boise, Meridian and Twin Falls hospitals, which have neonatal intensive care units.



St. Luke's meets patients where they're at, even if that means developing new treatment models. The St. Luke's Clinic – COVID Recovery opened summer 2021 to study and further understand patients' symptoms, while a multi-disciplinary team continues their care.

At a Glance: Caring for Our Communities in 2021

St. Luke's primary service area is Ada County, with our secondary service area covering Southwest and South-Central Idaho, Eastern Oregon and Northern Nevada. Below is a broad overview of the benefits St. Luke's provides to our service areas. This report also includes benefit snapshots broken down by county: Ada, Canyon and Twin Falls. All numbers are current as of the fiscal year ending Sept. 30, 2021.



\$610.5 Million
Total Community
Benefit



\$20.2 Million
Charity Care



\$66.2 Million
Services and Programs for the
Community



\$8.7 Million
Donations Received



It is a humbling opportunity to invest in large and small nonprofits doing extraordinary work at the ground level.

– Theresa McLeod, St. Luke's Administrator of
Community Health & Engagement

Community Needs Determination Process

St. Luke's community health effort is directed by community needs assessments, community boards and our community health team. In 2019, St. Luke's published our most recent Community Health Needs Assessment, which was designed to help us better understand the most significant health challenges facing the individuals and families in our service areas.

Local community health teams, in collaboration with internal and external stakeholders, are responsible for developing, implementing and maintaining optimal community health initiatives designed to address our communities' most significant health needs.

Report of Community Benefits 2021

Canyon County

Our commitment to Canyon County continues to grow with St. Luke's Nampa Medical Center, St. Luke's Fruitland Medical Plaza, and clinics throughout the county and in the Fruitland-Ontario area. We're a dedicated partner with area nonprofits, working together to improve the health of people in this rapidly growing and diverse region, from populous cities to smaller, more remote rural communities.



\$ 58.6 Million
Total Community Benefit



\$188,625
Donations Received



982
Volunteer Hours



7
Volunteers



1,085
Employees



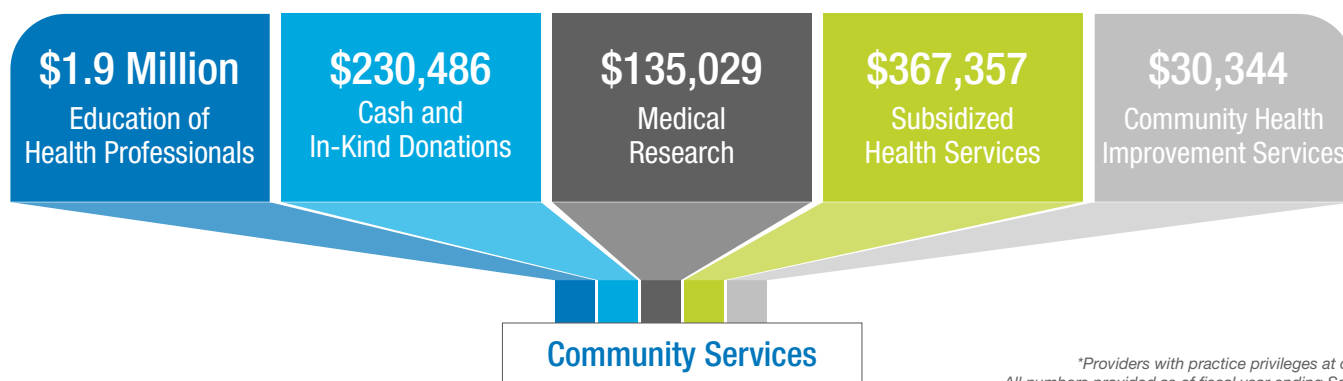
200
Advanced Practice Providers*



436
Physicians*

The Mentoring Network in Nampa helps adults volunteer to mentor school children. For several years, St. Luke's has provided the nonprofit grants to help meet its goal of growing its total number of kids served by 5-10% annually.

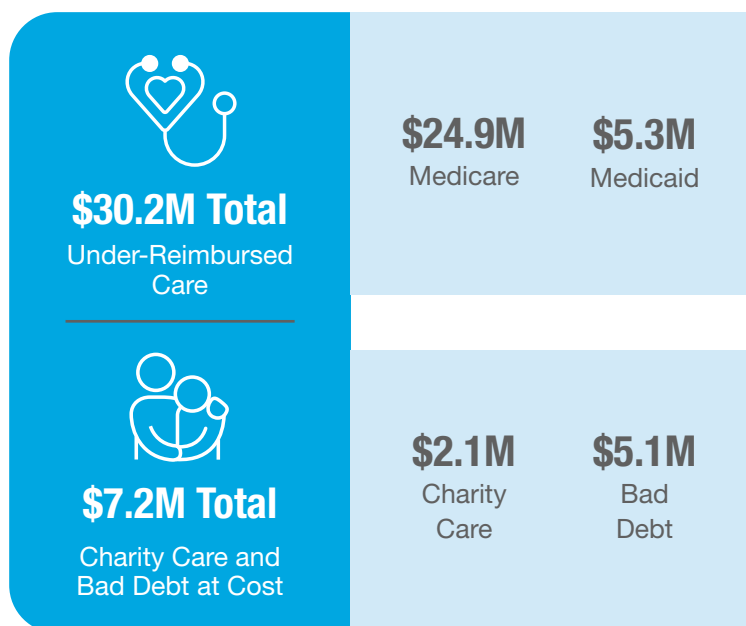
Providing a High Quality of Care



*Providers with practice privileges at our locations.
All numbers provided as of fiscal year ending Sept. 30, 2021.

St. Luke's Canyon County facilities received **\$3,801,214** and **\$3,859,789** in government assistance revenue in the fiscal years ending September 2020 and 2021, respectively. These relief funds were to compensate for revenue lost because of suspended elective procedures due to the COVID-19 pandemic. The unreimbursed, charity care and bad debt amounts disclosed in this report do not include this government assistance revenue.

St. Luke's provides health care to eligible patients without charge or at a reduced rate, based upon a sliding scale derived from federal poverty guidelines.



The goal of our community boards is to strengthen St. Luke's ability to provide the highest quality health care to our patients and our community.

– Andy Rodriguez, St. Luke's Health West Treasure Valley Community Board Chair

Improving Access to Patient-Centered Care

\$18.5 Million

Total Capital Improvements

One hundred percent of St. Luke's revenue after expenses is reinvested into land, facilities, equipment and other capital supporting the hospital's mission for Canyon County.

\$3 Million

Nampa Campus Development

This campus expansion included inpatient services as well as additional outpatient services to continue to meet the health care needs of our growing community.

\$13.4 Million

St. Luke's Cancer Institute Development

The institute opened its doors to the public in July 2021. With more than double the size of the former space, it allows St. Luke's to expand services, including psychiatry, survivorship, clinical research, spiritual care, nutritional counseling, rehabilitation and acupuncture. It also includes St. Luke's first integrated physical therapy gym for cancer patients and our first offering of gynecological cancer services outside of Boise.

\$2.1 Million

Technology

We continually upgrade key information technology infrastructure to boost efficiencies, lower costs and, most importantly, improve safety and quality for patients.

Thank You

Our work assessing and addressing community needs would not be possible without a visionary board of directors and dedicated community boards. We are grateful for their partnership and guidance.

St. Luke's Health System Board of Directors as of Sept. 30, 2021:

Bob Lokken, Chair
Rosa Davila
Brigette Bilyeu
Tom Corrick
Lucie DiMaggio, MD
Mark Durcan
Lisa Grow
Allan Korn, MD
Dan Krahn
Jon Miller
Arthur F. Oppenheimer
Rich Raimondi
Chris Roth, President/CEO
Andrew Scoggin
Karen Vauk
Bill Whitacre

St. Luke's West Treasure Valley Community Board Members as of Sept. 30, 2021:

Andrew Rodriguez, Chair
Nikole Zogg, PhD, Chair-Elect
Ron Bitner
Shelley Bonds
Evelyn Dame
Bill Deal
Bert Glandon
Janet Komoto
Paul Lodge
Brent Nelson, MD
Sarah Porter, MD
Bill Russell
Timothy Sawyer, MD
Kim Stutzman, MD
Chris Veloz
Rick Youngblood
Misty Robertson



The information provided in this report is required by Idaho Code 63-602D, which states that 501(c)(3) hospitals having 150 or more beds must file a community benefit report with the Board of Equalization by Dec. 31 of each year. According to the code, the report is to include a description of the process the hospital has used to determine general community needs that align with the hospital's mission. In addition, the report shall include the hospital's amount of:

- Unreimbursed services for the prior year (charity care, bad debt, and under-reimbursed care covered through government programs).
- Donated time, funds, subsidies and in-kind services.
- Additions to capital such as physical plant and equipment.

CREL-083.5.22