

# Community Benefit Report 2023

*Wood River*



# Continuing Our Legacy of Excellence in Health Care

From our founding in 1902 to 2022, when we were recognized as one of the top 15 Health Systems in the nation for the 9<sup>th</sup> consecutive year, St. Luke's has always been a leader in quality care and a dedicated community partner.

As Idaho's only locally based, not-for-profit, community owned and led health system, we are committed to providing all patients with the highest quality health care, regardless of their ability to pay.

merATIVE  
15 Top  
Health  
Systems



“ Health care is about relationships. Great health care comes from the heart, and I am thankful to be able to say that St. Luke's partnerships, community collaborations, board member engagement, volunteer dedication and team member commitment are driven by that heart-centered spirit. It makes our mission—and excellent patient outcomes and experiences—possible.

– Chris Roth, St. Luke's President and CEO



Through the Center for Community Health in Hailey—a local hub for health care, mental health and social services referrals—St. Luke's provided 186 counseling contracts to mental health providers for community members who needed financial assistance for mental health support.



Idaho BaseCamp helps young people connect to their environment, community and themselves through its fifth grade outdoor adventure education program. With support from St. Luke's, more than 500 students completed the program and built communication and personal accountability skills to reduce bullying and peer pressure.



# St. Luke's Health System Overview

## Report of Community Benefits 2023

St. Luke's primary service area is Ada County, with our secondary service area covering southwest, south-central and west-central Idaho, eastern Oregon and northern Nevada. The numbers below provide a broad overview of the rich benefits St. Luke's provides to local communities in these counties: Ada, Blaine, Canyon, Elmore, Jerome, Twin Falls and Valley. All numbers are current as of the fiscal year ending Sept. 30, 2023.



**\$869 Million**  
Total Community Benefit



**\$36 Million**  
Charity Care



**\$105 Million**  
Services and Programs for the Community



**\$18.5 Million**  
Donations Received

## Community Needs Determination Process

St. Luke's community health efforts are directed by community needs assessments, St. Luke's community boards and Community Health and Engagement. In 2023, St. Luke's and partners conducted the first joint Community Health Needs Assessment, which is designed to help us better understand the most significant health challenges facing the individuals and families in our service areas.

Community Health and Engagement, in collaboration with internal and external stakeholders, is responsible for developing, implementing and maintaining optimal community health initiatives designed to address our communities' most significant health needs.



**St. Luke's dedication to community benefit guides us to maximize partnerships and available resources, ensuring people have equitable opportunities to achieve their optimal health and well-being.**

*– Theresa McLeod, St. Luke's Administrator of Community Health and Engagement*

# St Luke's Wood River Overview

## Report of Community Benefits 2023

St. Luke's Wood River Medical Center is a critical access hospital serving Blaine County and the surrounding region. It provides a broad range of advanced services for its size, including an Emergency Department staffed by board-certified emergency physicians, state-of-the-art surgical facilities and outpatient infusion services, including chemotherapy. A wide variety of primary and specialty care providers coordinate patient care in local clinics, along with a network of 170 physicians.



# \$9.8 Million

Total Community Benefit



**\$3.4 Million**  
Donations Received



**193**  
Volunteer Hours



**9**  
Volunteers



**444**  
Employees

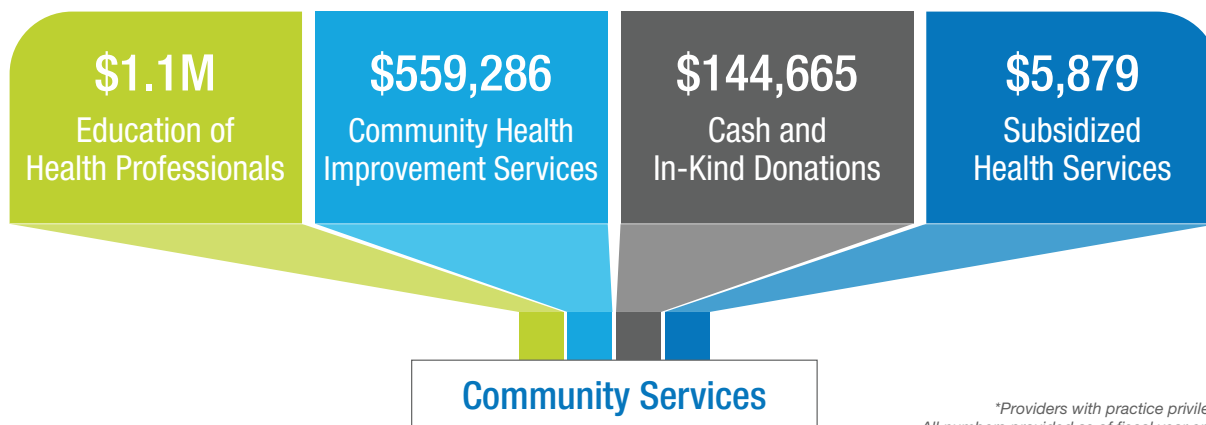


**170**  
Physicians\*



**47**  
Advanced Practice Providers\*

## Providing a High Quality of Care



\*Providers with practice privileges at our locations. All numbers provided as of fiscal year ending Sept. 30, 2023.

# St Luke's Wood River Overview



St. Luke's provides health care to eligible patients without charge or at a reduced rate, based upon a sliding scale derived from federal poverty guidelines.



**St. Luke's Wood River is committed to supporting the well-being of our community members and visitors, extending care beyond the hospital walls.**

*– Almita Nunnelee, St. Luke's Wood River Chief Operating Officer/Chief Nursing Officer*



# Giving Thanks

*Our work assessing and addressing community needs would not be possible without a visionary board of directors and our dedicated community boards. We are grateful for their partnership and guidance.*

## **St. Luke's Health System Board of Directors as of Sept. 30, 2023:**

Andrew Scoggin, Chairperson  
Emily Baker  
Brigette Bilyeu  
Tom Corrick  
Rosa Dávila, PhD  
Lucie DiMaggio, MD  
Mark Durcan  
Bill Gilbert  
Lisa Grow  
Allan Korn, MD  
Dan Krahn  
Bob Lokken  
Rich Raimondi  
Chris Roth, President/CEO  
Jill Twedt  
Bill Whitacre

## **St. Luke's Wood River Community Board Members as of Sept. 30, 2023:**

Eric Thomas, Chairperson  
Bill Boeger  
Erin Clark  
Jim Foudy  
Ben Holmes  
George Kirk  
Jeanne Liston  
Julie Lyons, MD  
Cynthia Murphy  
Almita Nunnelee  
Susan Parslow  
Garry Pearson  
Keith Perry  
Bob Robideaux  
Roger Sanger, DDS  
Jeff Smith  
Mary Williams

*The information provided in this report is required by Idaho Code 63-602D, which states that 501(c)(3) hospitals having 150 or more beds must file a community benefit report with the Board of Equalization by Dec. 31 of each year. According to the code, the report is to include a description of the process the hospital has used to determine general community needs that align with the hospital's mission. In addition, the report shall include the hospital's amount of:*

- *Unreimbursed services for the prior year (charity care, bad debt, and under-reimbursed care covered through government programs).*
- *Donated time, funds, subsidies and in-kind services.*
- *Additions to capital such as physical plant and equipment.*