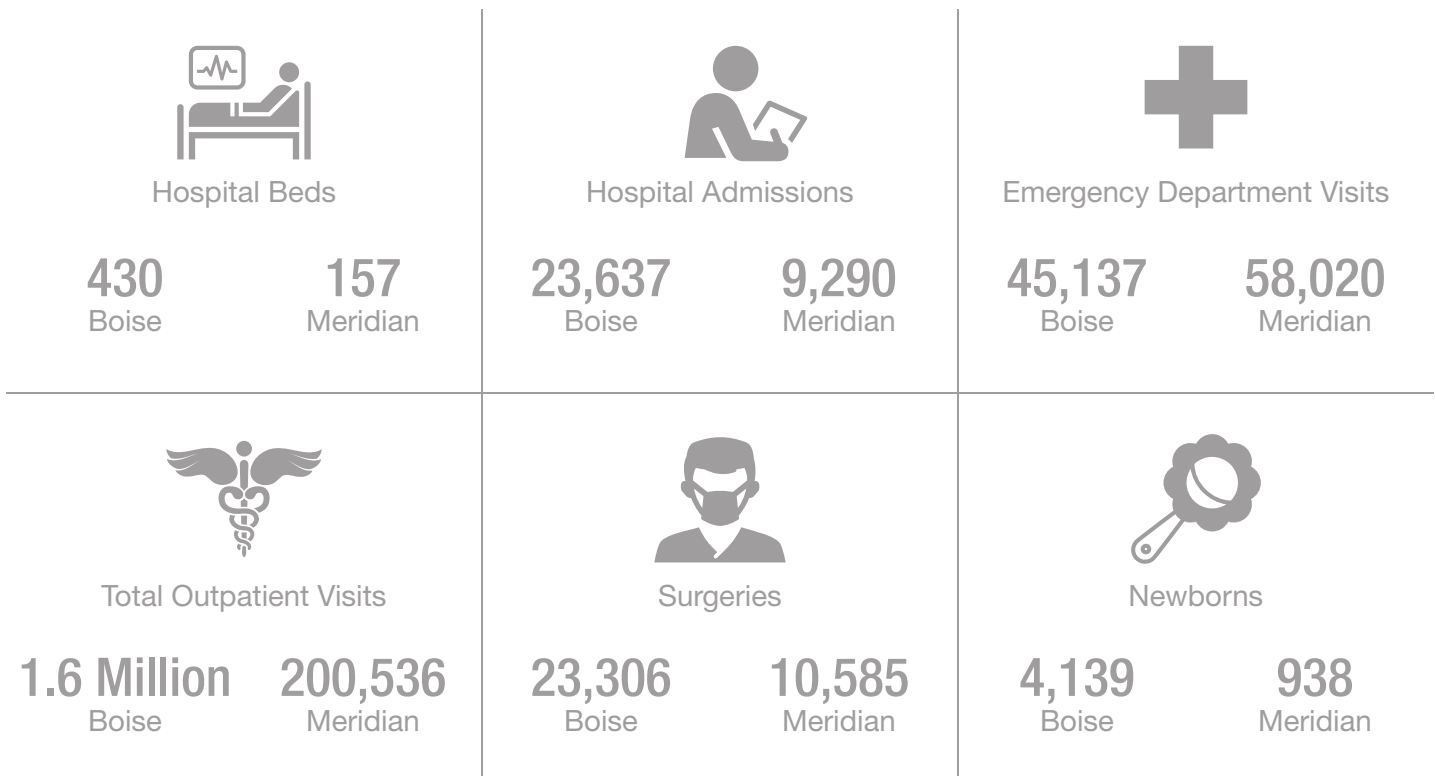


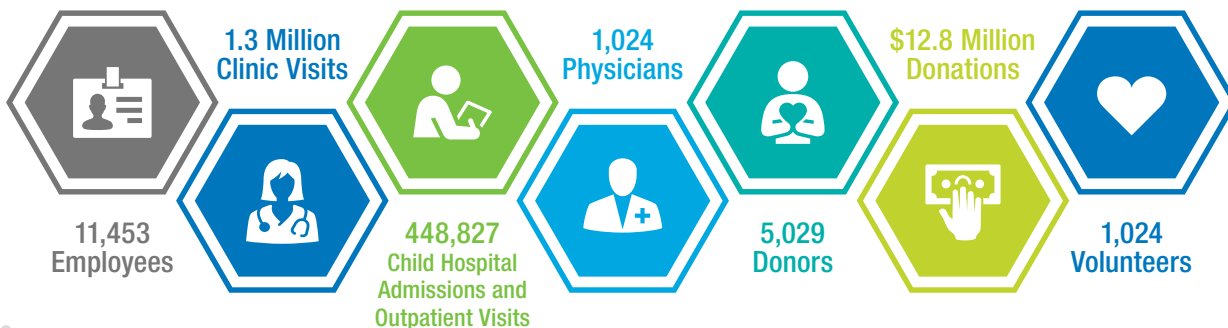
St. Luke's in the Treasure Valley serves the growing cities of Boise, Meridian, Eagle and beyond. St. Luke's Boise is Idaho's largest health care provider, the flagship hospital of St. Luke's Health System and home to the state's only Children's Hospital. St. Luke's Meridian is a full-service medical center with the busiest Emergency Department in Idaho. Our Boise and Meridian hospitals and Treasure Valley clinics are Magnet-designated for nursing excellence.

Caring for Our Communities – FY 2023

Current as of Sept. 30, 2023.



Treasure Valley – Boise, Meridian, Eagle



Reinvesting in Our Communities – Treasure Valley



\$17.8 Million
Charity
Care



\$604.7 Million
Community
Benefit



\$152,500
Community Health Improvement Fund
Grants to 23 Qualifying Organizations

