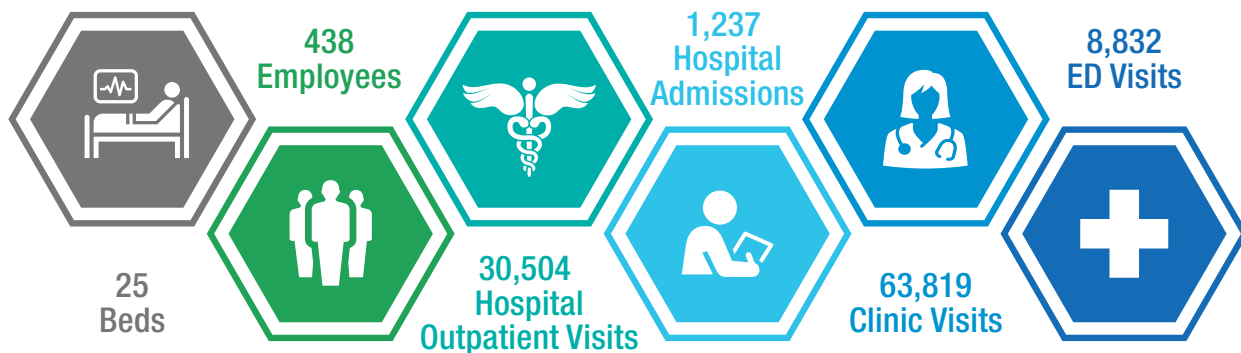


St. Luke's Wood River is a critical access hospital providing a wide range of advanced services for its size, including an emergency department staffed by board-certified emergency physicians, state-of-the-art surgical facilities and outpatient infusion services including chemotherapy. A wide range of providers coordinate patient care locally, including a network of more than 30 physicians.

Caring for our Communities FY 2017



1,610
Surgeries



179
Newborns



45
Providers



106
Volunteers



833
Donors



\$2 Million
Donations

Reinvesting in Our Communities



\$3.5 Million
Charity Care



\$50,000
Community Health Grants
to 23 Nonprofits from St. Luke's
Wood River



\$125,976
Community Health Grants
to 19 nonprofits from St. Luke's
Wood River Foundation

Economic Impact

\$98.5 Million
Sales Impact

\$46.5 Million
Wage and Salary Impacts

\$1.46 Million
Indirect Tax Effect
(Mainly Sales and Property Taxes)

776
Jobs Created



Awards

Watson Health™
15 TOP
HEALTH SYSTEMS
2018



Robert Wood Johnson
Foundation

Blaine County ranked the 3rd healthiest county in Idaho in 2016 and 2017 by the Robert Wood Johnson Foundation's County Health Rankings & Roadmaps Report.

Specialties

- 24/7 Emergency Department with Board Certified Physicians
- Outpatient Infusion Services
- OB/Labor and Delivery
- Orthopedic and General Surgery
- Intensive Care
- Mental and Behavioral Health
- 16 Physician Clinics
- Diagnostic Imaging
- Rehabilitation
- 3D Mammography
- Integrative Therapies
- Center for Community Health