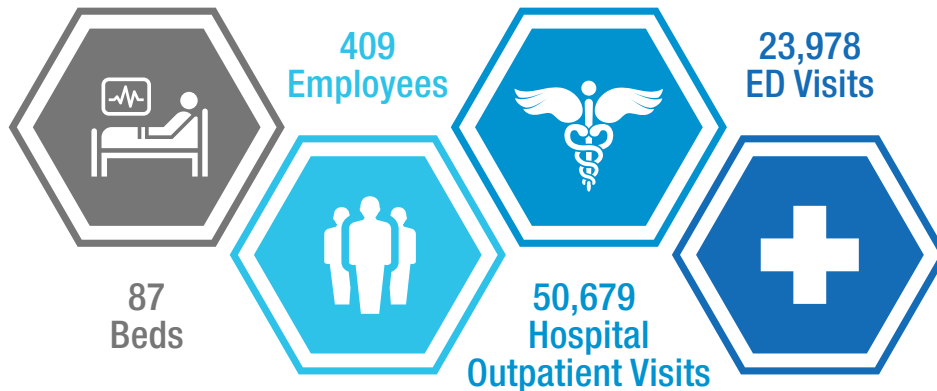










St. Luke's Nampa opened in 2012 with an emergency department, lab, imaging and physician clinics, and became a full-service community hospital in 2017. St. Luke's Nampa provides a wide range of advanced services and is home to the Family Care Unit, a labor and delivery unit with family-centered suites that include NICU care.

## Caring for our Communities FY 2017

### Nampa



### Treasure Valley

 <b>1+ Million</b> Clinic Visits	 <b>38,403</b> Hospital Admissions	 <b>32,334</b> Surgeries	 <b>5,727</b> Newborns
 <b>1,002</b> Providers	 <b>846</b> Volunteers	 <b>5,280</b> Donors	 <b>\$7.9 Million</b> Donations

## Reinvesting in Our Communities – Treasure Valley



**\$52.7 Million**  
Charity Care



**\$506 Million**  
Community Benefit



**\$592,000**  
Community Health Grants  
to 92 Nonprofits

## Economic Impact – Treasure Valley

**\$3 Billion**  
Sales Impact

**\$1.34 Billion**  
Wage and Salary Impacts

**\$61.2 Million**  
Indirect Tax Effect  
(Mainly Sales and Property Taxes)

**22,554**  
Jobs Created



## Specialties

- OB/Labor and Delivery
- In-Room NICUs and Family Care Units
- Emergency Services
- Intensive Care
- Cardiology
- Orthopedics
- Surgery
- Outpatient Pharmacy
- Breast Care Services

Watson Health™  
**15 TOP**  
HEALTH SYSTEMS  
2018