

Outpatient Brain Injury Program



2019 Report Card

About Us

St. Luke's Outpatient Brain Injury Program (OPBI) is a comprehensive program with one goal: To educate and treat patients and families dealing with neurological injury.

The OPBI program has served patients and families since 1987. We're known throughout the community as the premiere outpatient rehabilitation provider for neurological conditions. Because of our program's longevity, we've been successful in establishing strong working relationships with school districts, universities and employers throughout Idaho.

Treatment Plans

We offer a specialized interdisciplinary treatment approach designed to meet the needs of children, adolescents and adults, and support for their families.

After initial evaluations, all patients receive an individualized treatment plan that emphasizes their reintegration back to their communities, including home, school and work.

Team Approach

Patients and families work with a designated team of rehabilitation specialists who have extensive experience treating people with neurological issues. The team meets on a regular basis to review patient care plans, progress and potential barriers.

The team can consist of:

- Physical Therapist
- Occupational Therapist
- Speech/Language Pathologist
- Social Worker
- Neuropsychologist
- Physiatrist
- Program Coordinator

We also work closely with referring providers and other medical specialists involved in our patients' medical care.

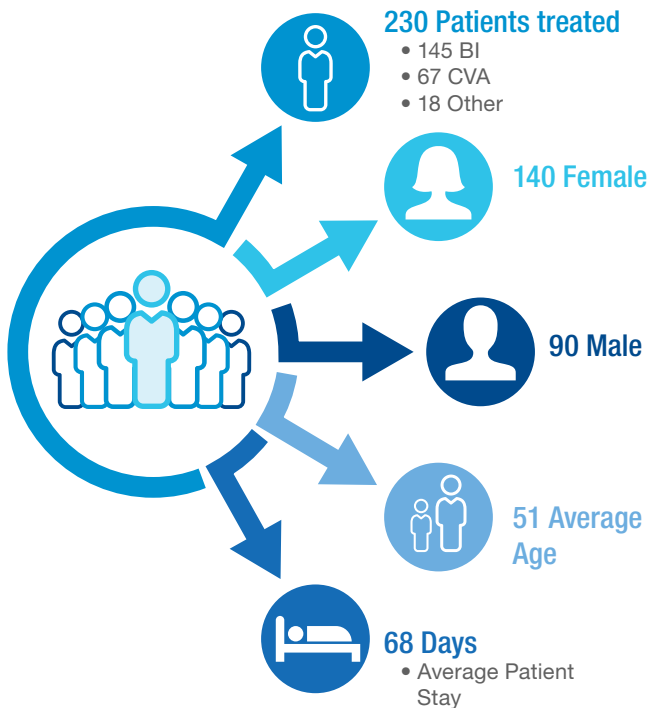


For more information:

Jennifer Hutchings, RN, Outpatient Neurological Program Coordinator
Phone: 208-385-3251
Email: hutchinj@slhs.org
Fax: 208-385-3281

Outpatient Brain Injury Program – 2019

OPBI 2019 Adult Outcomes

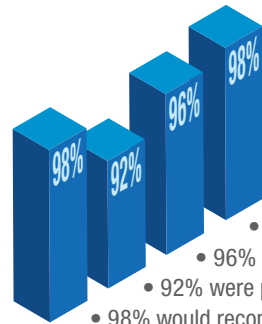


PATIENT GOALS

85% Completed Program

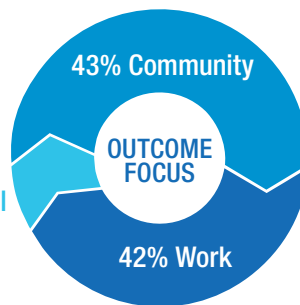
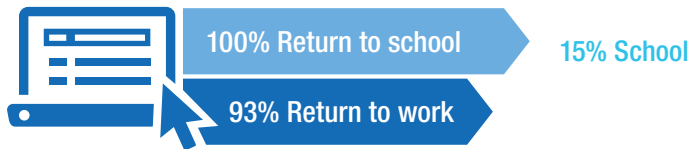
79% Met Predicted Outcomes

1 Average increase in functional level



PATIENT SATISFACTION

- 98% said information presented was clear
- 96% said they were included in goal setting
- 92% were pleased with quality of care
- 98% would recommend services to others



QUALITY OF LIFE

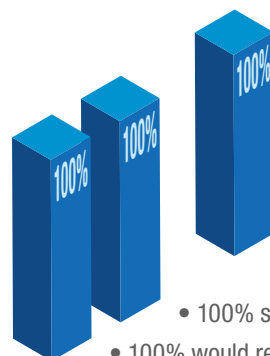
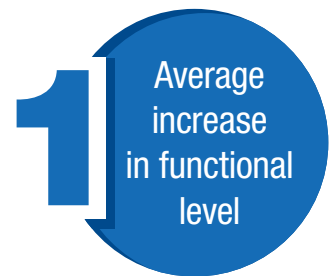
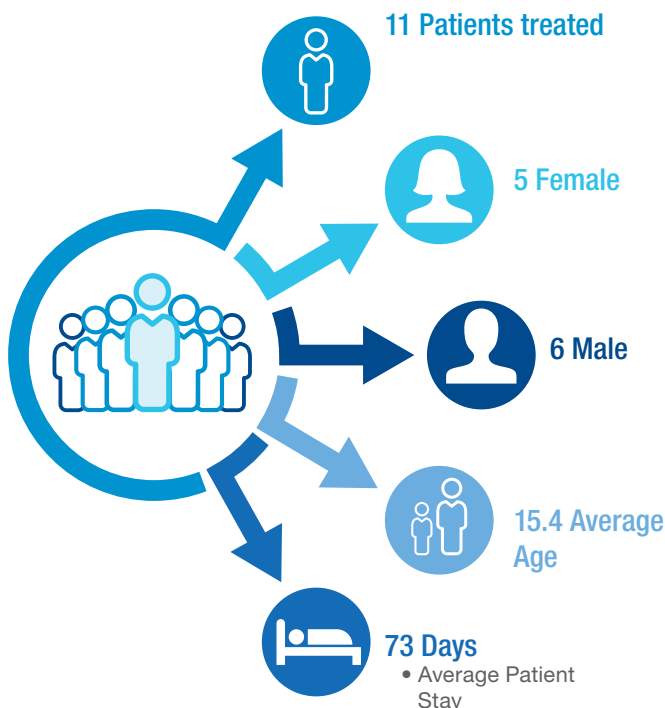
Patients reported feeling the same or better at

3 months 91%

1 year 94%



OPBI 2019 Pediatric Outcomes



PATIENT SATISFACTION

- 100% said the therapist explained things to them
- 100% said therapy helped
- 100% would recommend St. Luke's to a friend