

# Community Benefit Report

Ada County

2021



**Better Together**

*A hiker and her companion explore a new foothills trail created through a partnership between St. Luke's and the City of Boise. The 0.75-mile trail connects the Boise VA Medical Center to existing trails in the Military Reserve area.*

CREL-083.3.22

# Continuing Our Legacy of Excellence in Health Care

From our founding in 1902 to 2021, when we were recognized as one of the top 15 health systems in the nation for the 8<sup>th</sup> consecutive year, St. Luke's has always been a leader in health care and a dedicated community partner.

As Idaho's only locally based, not-for-profit, community-owned and community-led health system, we are committed to providing all patients with the highest quality health care, regardless of their ability to pay.

**Watson Health<sup>®</sup>**

**15** Top Health Systems<sup>®</sup>



“Together, every day, we are creating a world-class health system that deeply and expertly cares for patients and families, despite whatever hurdles are thrown our way.”

– Chris Roth, St. Luke's President and CEO



Teaching new parents of high-risk infants lifesaving skills became much harder during the pandemic. Fortunately, a St. Luke's grant to the American Heart Association helped distribute 200 reusable, at-home, infant CPR kits among Nampa, Boise, Meridian and Twin Falls hospitals, which have neonatal intensive care units.



St. Luke's meets patients where they're at, even if that means developing new treatment models. The St. Luke's Clinic – COVID Recovery opened summer 2021 to study and further understand patients' symptoms, while a multi-disciplinary team continues their care.

## At a Glance: Caring for Our Communities in 2021

St. Luke's primary service area is Ada County, with our secondary service area covering Southwest and South-Central Idaho, Eastern Oregon and Northern Nevada. Below is a broad overview of the benefits St. Luke's provides to our service areas. This report also includes benefit snapshots broken down by county: Ada, Canyon and Twin Falls. All numbers are current as of the fiscal year ending Sept. 30, 2021.



**\$610.5 Million**  
Total Community  
Benefit



**\$20.2 Million**  
Charity Care



**\$66.2 Million**  
Services and Programs for the  
Community



**\$8.7 Million**  
Donations Received



It is a humbling opportunity to invest in large and small nonprofits doing extraordinary work at the ground level.

– Theresa McLeod, St. Luke's Administrator of  
Community Health & Engagement

### Community Needs Determination Process

St. Luke's community health effort is directed by community needs assessments, community boards and our community health team. In 2019, St. Luke's published our most recent Community Health Needs Assessment, which was designed to help us better understand the most significant health challenges facing the individuals and families in our service areas.

Local community health teams, in collaboration with internal and external stakeholders, are responsible for developing, implementing and maintaining optimal community health initiatives designed to address our communities' most significant health needs.

# Report of Community Benefits 2021

## Ada County

St. Luke's serves the growing cities of Boise, Meridian, Eagle and beyond. St. Luke's Boise is Idaho's largest health care provider, the flagship hospital of St. Luke's Health System and home to the state's only Children's Hospital. St. Luke's Meridian is a full-service medical center with the busiest Emergency Department in Idaho. Our Boise and Meridian hospitals and Treasure Valley clinics are Magnet-designated for nursing excellence.



**\$ 430.6 Million**  
Total Community Benefit



**\$7.4 Million**  
Donations Received



**15,302**  
Volunteer Hours



**277**  
Volunteers



**10,958**  
Employees

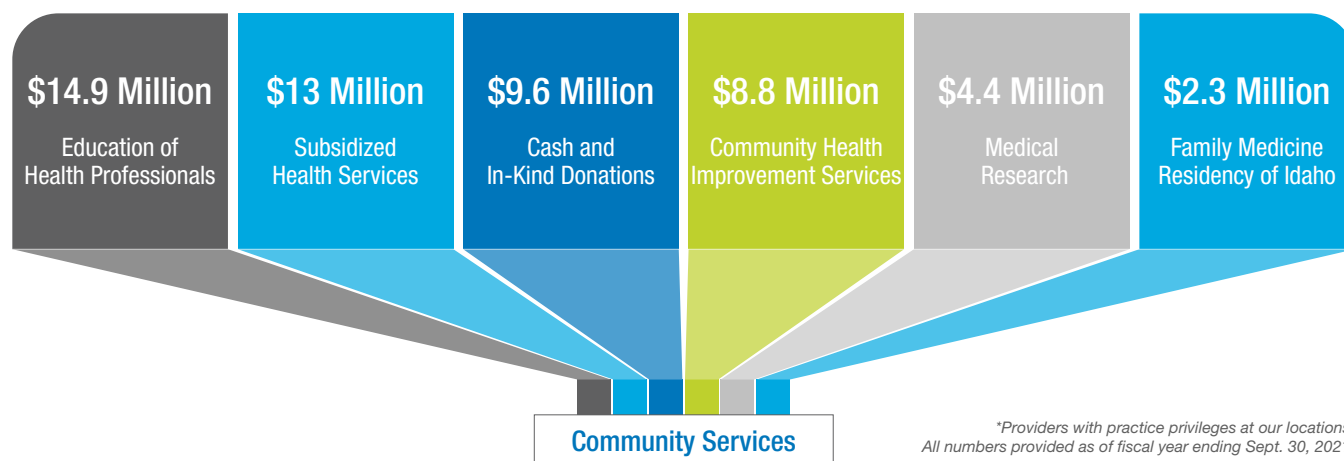


**507**  
Advanced Practice Providers\*



**984**  
Physicians\*

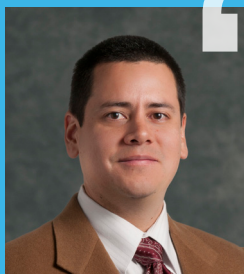
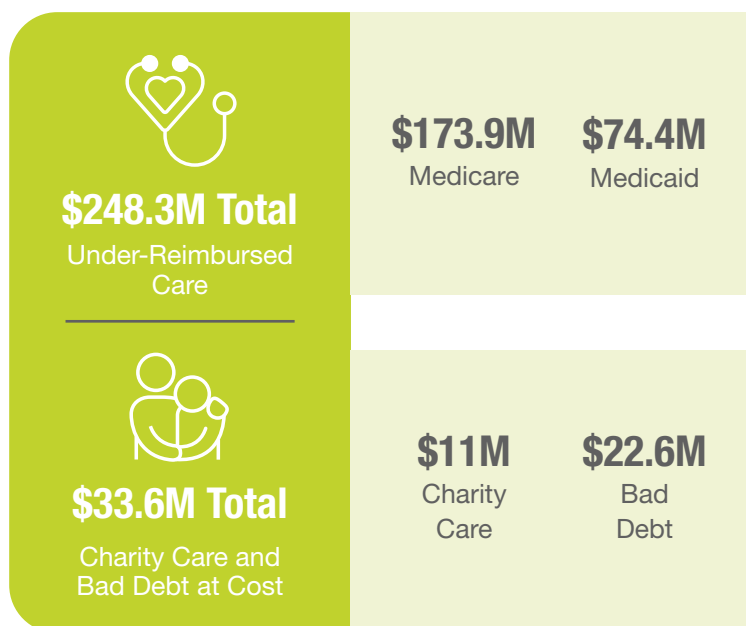
## Providing a High Quality of Care



\*Providers with practice privileges at our locations.  
All numbers provided as of fiscal year ending Sept. 30, 2021.

St. Luke's Ada County facilities received **\$36,145,669** and **\$33,061,623** in government assistance revenue in the fiscal years ending September 2020 and 2021, respectively. These relief funds were to compensate for revenue lost because of suspended elective procedures due to the COVID-19 pandemic. The unreimbursed, charity care and bad debt amounts disclosed in this report do not include this government assistance revenue.

St. Luke's provides health care to eligible patients without charge or at a reduced rate, based upon a sliding scale derived from federal poverty guidelines.



Together, we are strengthening our communities' safety nets while addressing the social determinants of health.

— Dr. Alejandro Necochea,  
St. Luke's Treasure Valley Community Board Member

## Improving Access to Patient-Centered Care

**\$95.7 Million**

Total Capital Improvements

One hundred percent of St. Luke's revenue after expenses is reinvested in the organization to serve the communities in Southwestern Idaho and Eastern Oregon in the form of staff, buildings or new technology.

**\$19.4 Million**

Downtown Boise Campus Development

Phase 1 of our master plan to expand and update our Boise Medical Center—including building a new Central Utility Plant, parking garage, and shipping and receiving facility—was completed in 2021.

**\$15.1 Million**

Orthopedic and Specialty Facility

Development and construction of a new state-of-the-art orthopedic facility is underway at 27<sup>th</sup> Street and W. Fairview Avenue in Boise.

**\$20.7 Million**

Technology

We continually upgrade key information technology infrastructure to boost efficiencies, lower costs and, most importantly, improve safety and quality for patients.

**\$40.5 Million**

Other Projects

We are dedicated to updating equipment and expanding our clinics and facilities to give patients the best quality of care.

# Thank You

*Our work assessing and addressing community needs would not be possible without a visionary board of directors and dedicated community boards. We are grateful for their partnership and guidance.*

## **St. Luke's Health System Board of Directors as of Sept. 30, 2021:**

Bob Lokken, Chair  
Rosa Davila  
Brigette Bilyeu  
Tom Corrick  
Lucie DiMaggio, MD  
Mark Durcan  
Lisa Grow  
Allan Korn, MD  
Dan Krahn  
Jon Miller  
Arthur F. Oppenheimer  
Rich Raimondi  
Chris Roth, President/CEO  
Andrew Scoggin  
Karen Vauk  
Bill Whitacre

## **St. Luke's Treasure Valley Community Board Members as of Sept. 30, 2021:**

Dee Jay Mailer, Chair  
Jon Larkin, Chair-Elect  
Russ Duke  
Alejandro Necochea, MD  
Kelli Parker  
Joelle Powers, PhD  
Roger Quarles  
Lisa Roberts  
Robert Sanchez, PhD  
Nicole Thurston, MD  
Jill Wagers, DMD  
Noreen Womack, MD  
Marle Shelton-Hoff



*The information provided in this report is required by Idaho Code 63-602D, which states that 501(c)(3) hospitals having 150 or more beds must file a community benefit report with the Board of Equalization by Dec. 31 of each year. According to the code, the report is to include a description of the process the hospital has used to determine general community needs that align with the hospital's mission. In addition, the report shall include the hospital's amount of:*

- *Unreimbursed services for the prior year (charity care, bad debt, and under-reimbursed care covered through government programs).*
- *Donated time, funds, subsidies and in-kind services.*
- *Additions to capital such as physical plant and equipment.*

CREL-083.5.22